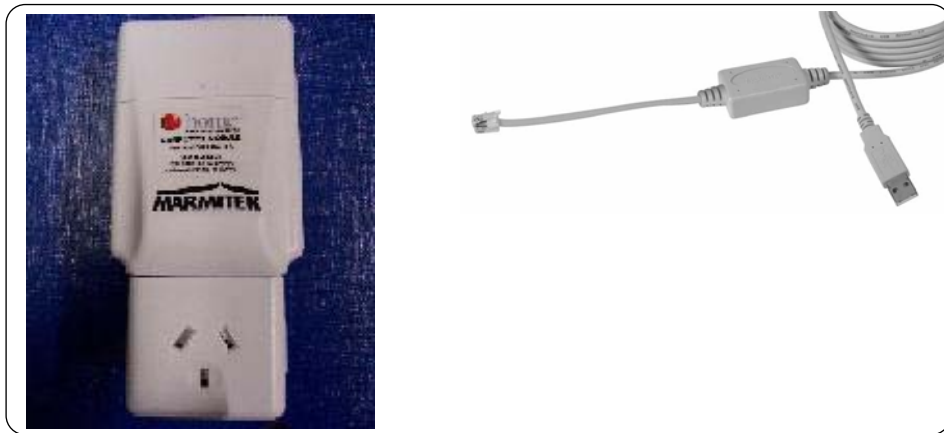


# Whome CM-12



## SAFETY

- To prevent short circuits, this product (except the outdoor camera) should only be used inside and only in dry spaces. Do not expose the components to rain or humidity. Do not use the product close to a bath, swimming pool etc.
- Do not expose the components of your systems to extremely high temperatures or bright light sources.
- Do not open the product: the device contains live parts. The product should only be repaired or serviced by a qualified repairman
- In case of improper usage or if you have opened, altered and repaired the product yourself, all guarantees expire. Whome/Marmitek does not accept responsibility in the case of improper usage of the product or when the product is used for purposes other than specified. Whome/Marmitek does not accept responsibility for additional damage other than covered by the legal product responsibility.

## WARNING

## INTRODUCTION

The Whome/Marmitek CM-USB allows you to use Whome/Marmitek ActiveHome and the CM11 computer interface via the USB port of your PC! The Whome/Marmitek CM-12 supports all the functions of the ActiveHome software.

### INSTALLING THE CM-12

Warning: Install the software before you connect the CM-USB to your PC!

1. Install the CM-USB software. Use the file "Setup.exe".  
You can download the most recent version of the software from: [www.marmitek.com](http://www.marmitek.com) > customer service
2. Follow the instructions on your screen.
3. After installing the software, connect the CM-USB cable to the PC. Your PC will automatically recognise the CM-USB cable ("Prolific USB-to-Serial COMM port").
4. You should now check which settings were selected for the CM-12 cable:
  - a. Right click "My Computer" on your desktop and select Properties.
  - b. Select the Hardware tab.
  - c. Select Device Manager.
  - d. Open the folder "Ports COM & LPT" (see Figure 1). "Prolific USB-to-Serial COMM port" will be shown in the list of devices.
  - e. In this window you can see (between brackets) what COMM port the CM-USB is installed at. (COM1, COM2, COM3 or COM4). See "Changing the COM port setting" if there a different port is indicated, other than COM1, COM2, COM3 or COM4.
  - f. Write down the setting. You need this information to install ActiveHome.

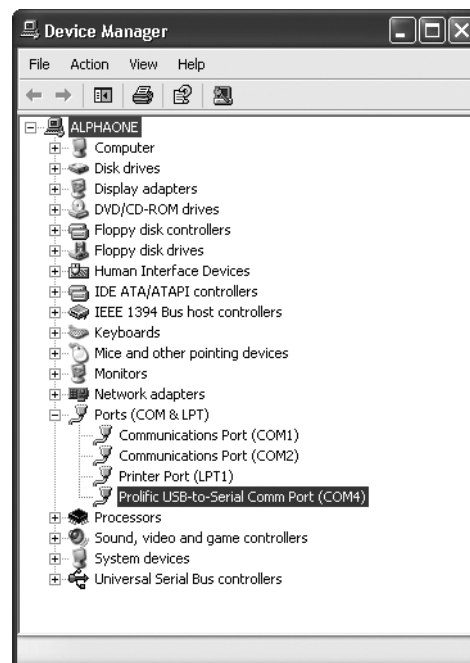


Figure 1

☞ If you can't find the "My computer" icon on your desktop, you can find this menu via Start > Control Panel > System.

## INSTALLING ACTIVEHOME

You have to reinstall ActiveHome after you installing the CM-USB (your configuration files will not be changed).

1. Install ActiveHome version 1.42 on the ActiveHome CD included.  
You can also download ActiveHome 1.42 from: [www.marmitek.com](http://www.marmitek.com) > customer service.
2. When the window "CAUTION COMMUNICATION PORT" opens, select YES (Figure 2).



Figure 2

3. Click Next.
4. Select the COM port the CM-12 is installed on (Figure 3: COM1, 2, 3 of 4).
5. Follow the instructions on your screen to complete the installation.



Figure 3

**Changing the COM port setting**

If the CM-12 has been installed on a different COM port than COM1, 2, 3 of 4, you need to change the setting:

- a. Right click "My Computer" on your desktop and select Properties.
  - b. Select the Hardware tab.
  - c. Select Device Manager.
  - d. Open the folder "Ports COM & LPT".
- "Prolific USB-to-Serial COMM port" will be shown in the list of devices (Figure 1).
- e. Select Prolific USB-to-Serial COMM port then Properties.
  - f. Select the Port Settings tab (Figure 4).

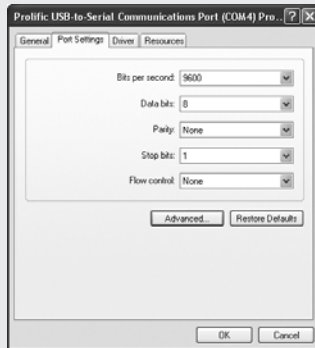


Figure 4

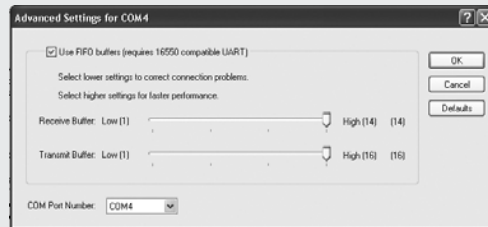


Figure 5

- g. Click Advanced.
- h. In the windows Advanced, use the option box COM port number to choose a different COM-port (Figure 5). Select a COM port that is not used in the list "Ports COM & LPT" (Figure 1).

In some versions of Windows (98, ME) it is not possible to change the COM port number in the Advanced window. If this is the case, remove the other applications that use the COM3 or COM4 port from your system and then install CM-12. CM-12 will automatically choose COM3 or COM4. You can reinstall your own applications after installing CM-12.

More questions? For an up-to-date list of frequently asked questions about this product, visit [www.marmitek.com](http://www.marmitek.com) > customer service. and [www.whome.com.au](http://www.whome.com.au).

**Compatibility**

Windows 98SE, ME, 2000 and Windows XP

USB version 1.1 and higher

ActiveHome version 1.42

Connects directly to all CM12 computer interfaces